

Oregon State University Proposed College of Health and Human Sciences

**OREGON STATE UNIVERSITY
PROPOSAL FOR CREATION OF A
COLLEGE OF HEALTH AND HUMAN SCIENCES**

- 1. Title of the proposed instructional, research, or public service unit. For name changes, give both the current and proposed names, and reasons for the change.**

Oregon State University (OSU) proposes:

- A. Establishing a new **College of Health and Human Sciences** uniting the current College of Health and Human Performance and the Family and Consumer Sciences units of the College of Home Economics and Education. Termination of the College of Health and Human Performance and the College of Home Economics and Education.

The separation of the School of Education and the 4-H Youth Development Program and Department from the College of Home Economics and Education was agreed upon mutually by the leadership of all involved units. (See letter Appendix A). The creation of a new unit including the School of Education and Department of 4-H Youth Development will be addressed in a separate Category 1 Proposal.

- B. Elevation of the **Extension Family and Community Development Program** (EFCD) to the college level, termination of the EFCD Department, and integration of all EFCD program faculty into OSU departments either within or outside the new College.
- C. Termination of the M.S. and Ph.D. graduate program in **Family Resource Management** (CIP # 190401) and reallocation of resources to support areas of growth in the Department of Human Development and Family Sciences.

For ease of review, the proposed actions (A, B, C) are discussed separately in the following narrative, and a summary is presented in Table 1 below.

Table 1: Summary of Proposed Academic Unit and Programmatic Changes

Establish

College of Health and Human Sciences

Termination

College of Health and Human Performance
College of Home Economics and Education
Department of Extension Family and Community Development
M.S., Ph.D. in Family Resource Management (CIP # 190401)

Separate Category 1 Proposal (to be submitted later)

School of Education
Department of 4-H Youth Development

Oregon State University Proposed College of Health and Human Sciences

A. Creation of a new College of Health and Human Sciences

The OSU College of Health and Human Sciences is dedicated to improving the lives, health, and environments of individuals, families and communities in Oregon and beyond. As a professional school, the College will offer exemplary undergraduate and graduate professional education, strong disciplinary and multidisciplinary scholarship, and effective Extension Service programs and other outreach initiatives. (See next page).

The creation of the College of Health and Human Sciences will establish the foundation for more important future initiatives that optimize OSU's capacity to address human health and well-being across the lifespan. These initiatives include:

- *Expansion of multidisciplinary instruction and programs* at both the undergraduate and graduate levels that increase collaboration among OSU departments and colleges
- *Enhancement of existing, strong professional degrees* through increased opportunities for individualized and enriched undergraduate and graduate education
- *Aggressive pursuit of multidisciplinary scholarship* in areas of greatest state and national interest, expanding external support for scholarship and outreach
- *Increased instructional, scholarly, and outreach productivity* through the integration of human and material resources, including facilities and equipment.

The College of Health and Human Sciences aligns several complementary OSU disciplines that directly address human health, development, and well-being across the lifespan.

- Five departments create the foundation of the new College: Apparel, Interiors, Housing and Merchandising; Exercise and Sport Science; Human Development and Family Sciences; Nutrition and Food Management; and Public Health. Each of these departments offer baccalaureate through doctoral degrees.
- The college-wide Extension Family and Community Development Program and other outreach programs are vital resources that extend knowledge from the College throughout the campus, the community, and the state of Oregon

In addition, all multidisciplinary programs currently administered in the two separate Colleges will join the new College. The College will continue strong, collaborative relationships with the Oregon Agricultural Experiment Station, other OSU Colleges, Centers and Institutes, and other universities and public and private partners.

The name, *College of Health and Human Sciences*, describes the mission and key disciplines to be included in the new college. The current colleges (Health and Human Performance, and Home Economics and Education) support research and instructional programs that promote the well-being of individuals, families and communities through the creation of supportive social, physical, community and institutional environments. These programs advance understanding of family and human development, human environments and relationships, health and health policy, and related disciplines. The name, *Health and Human Sciences*, captures these essential commitments of the colleges.

Oregon State University Proposed College of Health and Human Sciences

The Oregon State University College of Health and Human Sciences

The College of Health and Human Sciences at Oregon State University unites two successful units - the College of Health and Human Performance and the College of Home Economics and Education.

Five departments create the foundation of the new College: Apparel, Interiors, Housing and Merchandising; Exercise and Sport Science; Human Development and Family Sciences; Nutrition and Food Management; and Public Health. The college-wide Extension Family and Community Development Program is the new College's most vital resource for extending knowledge from the College throughout Oregon.

Our Mission - The College of Health and Human Sciences advances knowledge, policies, and practices to enhance the lives, health, and environments of individuals, families and communities in Oregon and beyond. We achieve this mission through:

- Exemplary undergraduate and graduate education that prepares globally minded professionals to meet current and future challenges and opportunities.
- Strong, creative disciplinary and multidisciplinary scholarship that addresses vital issues affecting health, development, and quality of life across the lifespan.
- Effective Extension Service programs, continuing education, and outreach initiatives that extend knowledge and scholarship across and beyond the campus.

Our Vision - The College of Health and Human Sciences will expand its leadership in education, scholarship, and outreach to improve the lives, health and environments of individuals, families, and communities.

Our Values - We share the values that guide Oregon State University: Accountability, Diversity, Respect, Responsibility, and Truth. To these values, we add our dedication to:

- **Improve Human Lives and Daily Environments.** Our most important responsibility is to address human needs, prevent and solve human problems, and improve lives and environments of all people, including the most vulnerable.
- **Personal Respect and Professional Collaboration.** Among our faculty, students, and all others with whom we work, we respect a diversity of experiences, thoughts, and approaches. This respect is the foundation for collaboration within the University and beyond.
- **Innovation and Creativity.** We aspire to identify and address new challenges and opportunities through strong, creative scholarship, teaching, and outreach. Understanding that creativity involves risk, we reward risk-taking as well as success.
- **Positive Leadership.** We seek to be a positive force within OSU, with public and private sector leaders, and with individuals and families. We demonstrate our leadership through thoughtful discourse, high ethical standards for personal and professional behavior, and commitment to action.

Oregon State University Proposed College of Health and Human Sciences

Moreover, the term *Human Sciences* is used nationally to designate home economics and related professional programs that address family and human development and environments. For example, the *National Association of State and Land-Grant Universities (NASULGC) Board of Human Sciences* represents Colleges of Human Sciences, Home Economics, Family and Consumer Sciences, Human Ecology, and Health and Human Development.

Planning for the new College of Health and Human Sciences engaged faculty, administrators, advisory groups, alumni and other stakeholders of both current Colleges (See Appendix A). From December 2000 through the present, faculty, staff and administrators were engaged in extensive focused meetings and frequent discussions. In these ways, alumni and other stakeholders were informed and updated at least quarterly. Over 300 faculty, alumni and other stakeholders responded to requests for input on the new College.

Through this evaluative and communicative process several core beliefs were identified that unite our diverse professions and disciplines. Many of these beliefs were grounded in shared status as professional schools that educate professionals who are able to intervene effectively and ethically in the lives of individuals, families, and communities. These shared core beliefs include the following:

- Human health, development, and well-being are multifaceted and are grounded in physical, physiologic, family, social, economic, and community environments and processes.
- The environments and processes that affect development and health begin before birth and extend throughout the life span.
- The creation, transmittal, and application of knowledge can improve human health, development, and well-being. Effectively applied, knowledge is transformed into life-enhancing behaviors, relationships, policies, and design of supportive daily environments in homes, institutions, workplaces, schools, and communities.
- Diversity arises from many sources and is integral to human health, development, and well-being. Responding to diversity is essential to effective teaching, meaningful scholarship, and effective outreach and service.
- Strong linkages with public and private sectors are essential to assure effective professional education, scholarship, and Extension Service and other outreach.

Beyond these shared beliefs, there is a productive history of programmatic and scholarly connections across the two current Colleges. This history spans more than two decades. Examples include curricular linkages between the Program on Gerontology, the Health Care Administration Program, and the Master of Public Health (MPH) in Gerontology. Undergraduate and graduate students frequently enroll in courses and minors across the Colleges, particularly in the areas of research methodology, public health, nutrition and exercise, lifespan and family development, and baccalaureate core courses.

Multidisciplinary Extension Service programs often have linked faculty in home economics and health. Examples include recent Extension Service education programs on prevention of osteoporosis and cardiovascular disease, support for special needs children

Oregon State University Proposed College of Health and Human Sciences

and their families, decision-making for end-of-life care, and poverty and community development.

Scholarly collaborations also have linked faculty and graduate students across the Colleges. Examples include research addressing aging and osteoporosis; functional apparel design; exercise, cardiovascular physiology, and nutritional status; smoking cessation interventions for high-risk families; development in special needs children; and evaluation of community education programs for older adults and family caregivers.

In the new, united College, collaborative instruction, scholarship, and outreach will expand. The immediate advantages that are anticipated include:

- *Enhanced faculty interaction and increased multidisciplinary instruction and research* in several areas, including, but not limited to: nutrition and physical activity; special needs children and families; environmental design; gerontology, health, and health services; and evaluation and research methodology.
- *Expansion of multidisciplinary Extension Service programming and collaboration* with residential faculty with expertise in areas of critical concern to Oregonians.
- *Improved coordination and collaboration in on-campus and extended education*, particularly in support of multidisciplinary degrees and certificates.
- *Improved efficiencies and effectiveness* through strategic integration of administrative and support services, research and instructional resources, and faculty governance structures.

B. Elevation of the Extension Family and Community Development (EFCD) Program within the College and Elimination of the EFCD Department.

The Extension Family and Community Development (EFCD) Program will be the new College's largest and most critical outreach program serving over 120,000 Oregonians annually. The EFCD Program is staffed by six on-campus faculty, and 23 field faculty and 20 program assistants distributed across Oregon. Trained and supervised volunteers are key resources as well.

The goal of the EFCD Program is to increase the capacity of families to create and manage resources and to maintain health and quality of life at all ages. To reach this goal, the EFCD program works collaboratively with families, communities and other partners to build strong families and caring, safe communities.

EFCD educational programs and community partnerships are focused in three areas:

- Diet, nutrition, and health
- Family development and resource management, and
- Leadership and community development.

Oregon State University Proposed College of Health and Human Sciences

Specific EFCD programs address positive parent-child relationships, aging and life transitions, health promotion and disease prevention, family micro-enterprise development, community leadership and problem-solving, and other topics.

Addressing such complex issues demands multidisciplinary collaboration. The new College unites faculty with diverse, yet complementary, skills and expertise. A full-time state level position has been reallocated to emphasize lifespan health issues, thus creating a stronger base for statewide family and community health programs. Extension Service programs will continue to engage Extension Service faculty and their colleagues from departments inside and outside the new College, including Sociology, Agricultural and Resource Economics, Ethnic Studies, and others.

Collaboration will be facilitated by two structural changes in the EFCD Program.

- First, administratively elevating the EFCD Program to the college level recognizes its essential multidisciplinary nature. Led by an Associate Dean for EFCD the college-wide program will enjoy greater visibility across the College and the University.
- Second, EFCD faculty will select academic homes in OSU departments within or outside the College. Integration of EFCD faculty into departments will disperse the awareness of the EFCD program across departments, and increase interactions between resident and off-campus faculty. At the same time, departmental appointments will assure EFCD faculty across Oregon that they have opportunities for participation in faculty governance, timely information regarding scholarship support and other resources, as well as effective support for development.

By July 1, 2002, all EFCD faculty will have selected a departmental home. Most, but not all, are expected to select departments within the new College. Most importantly, faculty will be encouraged to select homes that best fit their academic backgrounds and professional goals.

- To build EFCD program unity, strengthen teamwork, and assure accountability, the Associate Dean for EFCD will provide leadership. As a senior member of the College's administration, the Associate Dean will be positioned to work with others to develop, support and reward EFCD faculty who are assigned across Oregon.

Three other Extension programs (Agriculture, Forestry, and Marine Science) have benefited from college level leadership and integration of Extension Service faculty into departments. In implementing this model, the new College of Health and Human Sciences will draw on the successful experiences of these Extension Programs.

During the 2001-02 year of transition, a committee of faculty and administrators will identify the processes necessary to support effective integration and to assure EFCD faculty development and success in their important positions as OSU community educators.

Oregon State University Proposed College of Health and Human Sciences

C. Elimination of the Family Resource Management Graduate Program

Strategic reallocation of resources is critical within and into the new College. These resources must be invested in areas of growth and excellence.

The first step in this process of terminating the undergraduate *Family Finance* option in the Human Development and Family Sciences major in Spring 2001. Currently enrolled students in the Family Finance option will complete all required departmental coursework by spring of 2002.

As a second step in the reallocation of resources this Category I proposal requests approval of *the termination of the M.S., Ph.D. graduate degree programs in Family Resource Management*. The three active graduate students remaining in the graduate program will complete coursework for their degrees by spring of 2002. Dissertation work is likely to be completed in 2003.

The decision to eliminate these Family Resource Management programs was difficult. Financial well-being is a critical component of quality of life. The termination of the Family Finance option and the Resource Management program restricts the College's ability to address family finance issues. While relatively small compared to other programs in the College, both had viable numbers of students and potential for growth. Nevertheless, when two faculty persons associated with these programs retired in Spring 2001, these positions were the first identified for reallocation of internal resources to areas of higher enrollment and greater potential in the new College.

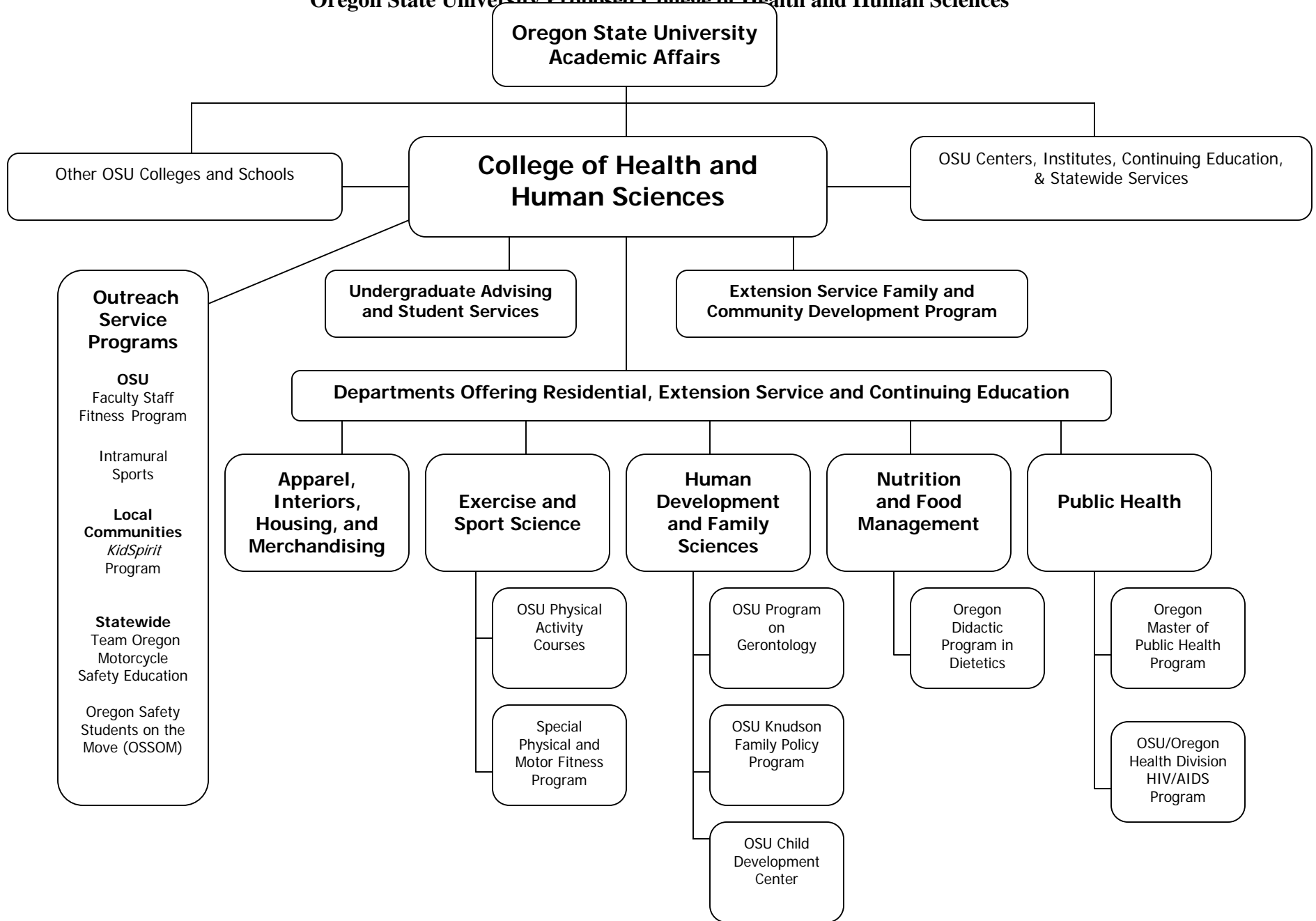
During 2001-2003, the College of Health and Human Sciences will examine further its instructional, scholarship and outreach activities. This thoughtful process is expected to lead to strategic enhancement and/or integration of other existing programs, and strategic investment in new and collaborative programs in high priority areas.

2. Location Within The Institution's Organizational Structure

The Dean of the College of Health and Human Sciences will report to the Oregon State University Provost and Executive Vice President.

See the Organizational Chart on page 8.

Oregon State University Proposed College of Health and Human Sciences



Oregon State University Proposed College of Health and Human Sciences

3. Objectives, Functions and Activities of the Proposed Unit

As stated earlier, the mission of the College of Health and Human Sciences is to advance knowledge, policies, and practices that enhance the lives, health, and environments of individuals, families and communities in Oregon and beyond. This mission will be achieved through undergraduate and graduate professional education, disciplinary and multidisciplinary scholarship, and Extension Service programs, continuing education, and outreach initiatives.

Undergraduate and Graduate Study: In Fall 2001, over 2,100 undergraduate majors and 200 graduate students were enrolled in degree programs within the proposed new College of Health and Human Sciences. The five departments in the new College each offer the baccalaureate, masters, and doctoral degrees (see Table 1, page 12 for summary). These departments include the following.

- ***The Department of Apparel, Interiors, Housing and Merchandising (AIHM)*** embraces a multidisciplinary approach to understanding the designed environment and human social, psychological and physical well-being. AIHM professional programs and scholarship focus on human needs as affected by the production, distribution, use and design of clothing, textiles, residential and commercial environments.

All AIHM programs are unique in the Oregon University System and enroll over 420 undergraduate and graduate students each year. In addition, the Department serves OSU students through AIHM minors, Baccalaureate Core, and graduate courses. AIHM has strong and well-established linkages with industry, businesses and trade organizations. A strong Advisory Board collaborates with the Department on curriculum development, expansion of career opportunities for students and support of AIHM programs. Industry recognizes AIHM as offering one of the top nine programs nationally.

AIHM faculty are internationally recognized for their research, creative scholarship, instructional program innovations and leadership in professional organizations. AIHM graduate students and faculty members have received 23 international, national and university awards in the past 10 years alone.

- ***The Department of Exercise and Sport Science (EXSS)*** focuses on the application of the biological, physical, social, and behavioral sciences in the study of physical activity and sport and their effects on the health, fitness, and quality of life of people of all ages and abilities. EXSS has nationally and internationally recognized faculty and research laboratories, and a vibrant intellectual community of students, faculty, and staff.

Baccalaureate, masters, and doctoral degrees are accredited and unique in the Oregon University System. Over 600 undergraduate and 60 graduate students major in EXSS programs each year. The undergraduate major has five degree options. All degree options include practicum and/or internship experiences. The Athletic Training option of the Exercise and Sport Science major is nationally accredited.

The Department offers MS and PhD degrees in Human Performance and an excellent teacher preparation program as part of OSU's MAT degree program. In addition, EXSS serves OSU through participation in the Baccalaureate Core and leadership of the OSU Physical Activity courses, which serves over 3,000 students each term. The ***Special***

Oregon State University Proposed College of Health and Human Sciences

Physical and Motor Fitness Program is offered for children with disabilities.

Participants receive individualized educational programs that emphasize physical fitness, gross motor development and aquatic skills. Almost 100 children and families are enrolled in this program annually. Students from across OSU work in the clinic to gain professional experience. In addition to support by the College, the program receives support through grants, contracts and user fees, and is a local United Way Fund recipient.

- *The Department of Human Development and Family Sciences (HDFS)* discovers, applies, and transmits knowledge that contributes to the optimal growth, development, and well-being of individuals and families across the life course. The department offers professionally accredited baccalaureate, masters and doctoral degrees that are unique in the Oregon University System. With over 500 undergraduate majors, HDFS is one of OSU's largest programs.

The curriculum prepares students for careers in early childhood development and education, human and family services, youth development, gerontology, and other fields. Each year over 30 graduate students pursue masters or doctoral degrees in HDFS. Recent graduates are employed in state and local government, research, and major universities.

HDFS faculty are strong teachers and nationally known scholars in family and lifespan development. External research support averages over one million dollars annually. The *B.E. Knudson Endowed Chair for Family Policy* supports education, scholarship and outreach to improve policies, programs, and laws that affect families across the lifespan.

HDFS leads two multidisciplinary OSU programs. Now in its 75th year of operation, the *Child Development Center* supports interdisciplinary child and family development research, student training, and an exemplary preschool program serving more than 150 children and their families. Annually over 300 OSU students gain applied experience through work in the Center. In addition to College support for its instructional mission, the Center receives nearly \$500,000 annually in external grants and contracts.

The *OSU Program in Gerontology* is Oregon's largest undergraduate gerontology program, offering the state's only undergraduate certificate in gerontology. Annually over 50 undergraduate students pursue certification and over 20 graduate students pursue graduate concentrations or minors. Faculty in all College of Health and Human Sciences departments conduct gerontology-related research. The *Peterson Endowment for Gerontology and Family Studies* further supports gerontology instruction and research.

- *The Department of Nutrition and Food Management (NFM)* examines the biochemistry, metabolic, and behavioral aspects of human nutrition as it relates to health promotion and disease prevention and management across the lifespan. Current faculty and graduate student research is examining obesity, nutrition and physical activity, and nutrient bio-availability and metabolism in relationship to human health and disease.

All NFM undergraduate degrees are professionally accredited and unique in the Oregon University System. Over 130 students are currently majoring in NFM. The Department offers Oregon's only approved *Didactic Program in Dietetics* providing the coursework required to become a Registered Dietitian. Over 80% of the graduates in this option earn prestigious dietetics internships compared to a national rate of 55%. Completion of the Nutrition Science option serves as a critical step toward medical or dental education,

Oregon State University Proposed College of Health and Human Sciences

other health professional degrees, or graduate school. The Food Service Management option prepares graduates for professional management positions in food service, including restaurant management, catering, schools and universities, hospitals and clinical facilities, food and equipment sales, and product development.

Graduate study prepares students for teaching, research, administration in universities, government, hospitals and schools, and community nutrition programs such as Women, Infant, Children, the Urban Indian Program, and the Peace Corps. Nationwide there is a critical need for more doctoral level nutrition and food management professionals.

- ***The Department of Public Health (H)*** addresses the effects of human behavior, social and governmental policies and programs, industrial environments, and health service systems on population health. Through academic programs and research endeavors, students gain the theoretical foundations, applied research techniques, and professional skills to function effectively in reducing risks, promoting health and preventing premature disease and disability in human populations. International health is a growing area of programming and scholarship in the Department.

All undergraduate through doctoral degrees are unique in the Oregon University System. The B.S. and M.P.H. degrees are nationally accredited. Over 400 students currently are pursuing Public Health degrees. Others participate in departmental minors and Baccalaureate Core courses. Undergraduate degrees include Environmental Health and Safety, Health Care Administration, and Health Promotion and Education. Currently there is a severe, nationwide shortage of Environmental Health and Safety professionals.

The Department offers a comprehensive array of graduate programs representing the varied disciplines of public health practice. The Department is a participant in the ***Oregon Master of Public Health (MPH)*** program in collaboration with Portland State University and the Oregon Health and Science University. At OSU, the MPH offers unique areas of concentration in Public Health Promotion and Education, Health Policy and Management, International Health, and Gerontology. The Department also leads the ***OSU-Oregon Health Division HIV/AIDS Program***.

The College will continue to offer undergraduate, pre-professional degrees that prepare students to pursue teacher licensure in physical education, health education, early childhood education, and family and consumer sciences. In collaboration with the OSU Teacher Education program, the College will continue to provide high quality initial and continuing licensure programs in these areas.

On the OSU-Cascades Campus, the College offers a baccalaureate degree in Human Development and Family Studies; a second baccalaureate degree in Outdoor Recreational Leadership and Tourism will be initiated following review and approval by faculty governance bodies at OSU and by OUS. An M.S. graduate degree program in Public Health will be phased in over several years.

Finally, the College will continue to lead the university-wide Program on Gerontology, to support numerous minors, and to participate in the Masters of Arts in Interdisciplinary Studies (MAIS.), the OSU Honors College, and the OSU International Studies degree (B.A.).

Oregon State University Proposed College of Health and Human Sciences

Table 2. College of Health and Human Sciences – Current Academic Areas

Our Departments And Degrees^a	Uniqueness in the Oregon University System (OUS); Accreditation/Endorsement
<p style="text-align: center;">Apparel, Interiors, Housing, and Merchandising</p> <p>BS: Apparel Design; Interior Design; Housing Studies; Merchandising Management [Options in Historic and Cultural Studies, Market Analysis and Research, and Merchandising Management]</p> <p>MA, MS, PhD: Apparel, Interiors, Housing and Merchandising (Several areas of concentration)</p>	<p>All degree programs are unique in OUS</p> <p>American Assn of Family and Consumer Sciences; National Kitchen and Bath Association</p>
<p style="text-align: center;">Exercise and Sport Science</p> <p>BS: Exercise and Sport Science [Options in Athletic Training, Fitness Program Management, Physical Education Teacher Education, Pre-therapy and Allied Health, and Applied Exercise Science]</p> <p>MAT^b: Physical Education; MS Movement Studies in Disabilities; MS, PhD: Human Performance</p>	<p>Some degree programs are unique in OUS</p> <p>Commission on the Accreditation of Allied Health Education Programs</p>
<p style="text-align: center;">Human Development and Family Sciences</p> <p>BS: Human Development and Family Sciences [Options in Child, Youth, and Family Services, Early Childhood Development and Education, Gerontology, Family and Consumer Science]</p> <p>MS, PhD: Human Development and Family Studies; MAT^b: Family and Consumer Sciences</p> <p>Certificate in Gerontology University wide OSU Program on Gerontology is administered by the HDFS Department</p>	<p>All degree programs are unique in OUS American Assn of Family and Consumer Sciences</p> <p>Meets voluntary standards of American Assn of Gerontology in Higher Education</p>
<p style="text-align: center;">Nutrition and Food Management</p> <p>BS: Nutrition and Food Management [Options in Dietetics, Food Service Management, Nutrition Science]</p> <p>MS, PhD: Nutrition and Food Management; Distance Degree: M.S.: Nutrition and Food Management with an area of concentration in Dietetic Management.</p>	<p>All degree programs are unique in OUS</p> <p>American Dietetics Assn; Commission on Dietetic Registration; American Assn of Family and Consumer Sciences</p>
<p style="text-align: center;">Public Health</p> <p>BS: Environmental Health and Safety; Health Promotion and Education [Options in Applied Health, Applied Health and Gerontology, Child and Adolescent Health, Community Health]; Worksite Health Promotion] Health Care Administration [Options in General Health Care Administration, Long Term Care Administration]</p> <p>MS: Environmental Health Management; Health and Safety Administration; MS, MAT^b: Health Education; MPH [Oregon Masters of Public Health degree is collaborative with PSU and OHSU]; PhD: Public Health</p>	<p>BS, MS, PhD programs and MPH areas of concentrations are unique in OUS</p> <p>Association of University Programs in Health Administration; Society of Public Health Education, Inc.; American Assn for Health Education Accreditation Council; Nat'l Environmental Health Science & Protection Accreditation Council; Council on Education for Public Health</p>

a All areas of concentrations and minors are not shown.

b Masters of Arts in Teaching (MAT) is offered in conjunction with OSU Teacher Education program.

Oregon State University Proposed College of Health and Human Sciences

Scholarship and Creative Activities

The key component in the mission of the new College of Health and Human Sciences is “strong, creative disciplinary and multidisciplinary scholarship that addresses vital issues affecting health, development, and quality of life across the lifespan.”

All faculty members engage in intellectual work that is validated by peers, communicated and appropriate to their discipline and assignment. (See Table 3). Scholarly and creative work reflects the strength and diversity of our faculty and disciplines, and includes:

- Laboratory-based investigations of nutrition, biochemistry, physiology, and environmental health
- Quantitative and qualitative investigations of family, community, public and private sector environments as they relate to human behavior, health and quality of life at all ages
- Development, implementation, and evaluation of institutional, workplace, family, community, and public education curriculums, programs, and materials
- Systems-analysis approaches to examine human behavior, health promotion and disease prevention practices, public and private sectors and environments
- Family, health, and social policy and program development and evaluation, and
- Artistic and other creative works in dance and design.

Annually, research and other scholarly initiatives are supported with over three million dollars in external grants and contracts from public and private sources. Since 1996, major funding has been awarded by:

- Federal agencies including the Public Health Service, the National Institute on Aging, the USDA National Research Initiative, USDA Challenge Initiatives, USDA Food and Nutrition Service, the Department of Education, National Oceanic and Atmospheric Administration, the Agency for Children and Families, the Child Care Bureau, the Environmental Protection Agency, and the National Institute of Environmental Health Sciences.
- Private foundations including the Robert Wood Johnson Foundation, the Ford Family Foundation, the Oregon Alzheimer’s Disease Association, the Oregon Community Foundation, the Northwest Health Foundation, the St. Vincent DePaul Society, the National Collegiate Athletic Association (NCAA), SEMATECH, the John C. Erkkila, M.D. Endowment for Health & Human Performance, and others.
- State and local government agencies including the Oregon Commission on Children and Families, the Oregon Employment Department, the Oregon Department of Human Services, the Oregon Department of Education, Oregon Health Division, the Metro-Green Spaces Education Grants, and others.

Oregon State University Proposed College of Health and Human Sciences

- In addition, each year seven to ten research projects in human sciences are supported with Oregon Agricultural Experiment Station funds totaling over \$300,000.

These combined extramural and Oregon Agricultural Experiment Station resources will support important research within the new College.

Table 3.
Scholarly and Professional Affiliations of
College of Health and Human Sciences Faculty Members

- American Academy for Kinesiology and Physical Education
- American Association for Health, Physical Education, Recreation and Dance
- American Association of Housing Educators
- American Association of University Programs in Health Administration
- American College of Health Care Executives
- American Dietetic Association
- American Evaluation Association
- American Family and Consumer Sciences Association
- American Heart Association
- American Public Health Association
- American Society for Clinical Nutrition
- American Society of Interior Designers
- American Society for Nutritional Sciences
- Gerontological Society of America
- Interior Design Educators' Council
- International Economics Association
- International Textiles and Apparel Association
- National Council on Family Relations
- National Environmental Health Association
- National Extension Association of Family and Consumer Sciences
- Society for Epidemiologic Research
- Society for Nutrition Education
- Society of Public Health Educators, and
- Other regional, national, and international professional organizations

Oregon State University Proposed College of Health and Human Sciences

In addition, faculty scholarship enriches and supports graduate education. Research methodology and statistics are fundamental requirements in all masters and doctoral degrees. In the new College, most graduate students will continue to have research assistantships or other opportunities to engage in scholarship in addition to the completion of their theses and dissertations.

Many graduate students work with Extension Service faculty on development of curriculum and educational resources, program evaluation, and dissemination. Overall, graduate students in the new College will continue to gain a solid foundation of scholarship, including professional presentations, publications, juried shows, web and other communication technologies.

In the new, united College, the current disciplinary and multidisciplinary scholarship will be expanded through collaboration in strategic research and graduate education. With the joining of the two existing colleges, areas of particular strength in the new College will be:

- A focused research initiative to investigate a key national initiative on nutrition, physical activity and health for persons of all ages
- Creation of positive environments, policies, and interventions that support optimal functioning and well-being among people of all ages and ability levels
- Aging, family, health and safety interventions in various public and private populations, including policy development, long term care services, and economic analyses
- Early childhood development including the needs of children with disabilities
- Research and evaluation methodology including epidemiology, theory development, measurement and assessment, multi-site and longitudinal design, and advanced multivariate analysis.

During the first years of the new College, the opportunities offered by these and other areas of strength will be explored fully by interdisciplinary faculty teams. The goal will be to expand collaborative scholarship, education, and outreach within and outside the College.

Extension Service, Continuing Education, and Other Outreach Programs

A core component of the new College will be Extension Service programs, continuing education, and outreach initiatives that improve the lives of individuals and families across and beyond the campus. These initiatives will expand the current programs of the separate Colleges.

Extension. The Extension Family and Community Development (EFCD) Program will be the new College's largest outreach program. In 2000-2001, the Extension Family and Community Development Program, staffed by approximately 43 FTE, reached over 125,000 people throughout Oregon. In the development of educational programming, EFCD field faculty work with OSU-based colleagues.

Oregon State University Proposed College of Health and Human Sciences

In the 2000-01, effective collaborations between EFCD and other faculty led to publications, several statewide conferences, new instructional materials, and educational programs.

Among these were:

- The OSU Extension Service tabloid *Poverty in Oregon* (Jan. 2000) that reached over 200,000 Oregon households and a companion distance education course on Poverty in Oregon, involving faculty and students in six OSU departments.
- Development and presentation of Oregon poverty simulation workshops for over 1,500 employees of the Oregon Department of Human Services, the Oregon Department of Corrections, and other state and local public and private organizations and agencies.
- Nutrition education programs assisted over 80,000 people who are food stamp eligible and other low- income families in 14 counties and the Warm Springs Indian Reservation; these programs resulted in improved dietary quality, food availability, food safety, and health.
- Co-sponsorship of an Oregon Family Impact Seminar for Oregon legislators and policy makers. The first seminar, held in January 2001, contributed to the development and passage of legislation that will support low-income working parents through a refundable childcare income tax credit.

The diversity and number of disciplines included in the new College will expand the statewide EFCD Program's access to faculty with expertise in areas of critical concern to Oregonians. Moreover, the elevation of the EFCD Program to college level will increase its visibility and the integration of EFCD faculty into academic departments is expected to increase effective access and collaboration.

Continuing Education. Both current Colleges have active continuing education initiatives ranging from credit and non-credit courses to full degrees. The Department of Nutrition and Food Management offers the nation's only distance education *M.S. degree in Nutrition and Food Management with an area of concentration in Dietetics Management*. Designed for registered dietitians, this degree currently enrolls approximately 20 graduate students across the country. Working with the OSU Office of Distance and Continuing Education, plans are underway for the expansion of this important national resource.

The Department of Apparel, Interiors, Housing, and Merchandising (AIHM) offers distance delivered graduate course work in *Fashion Theory*. This OSU course serves a University of Nebraska distance education Master's degree program and graduate students at The Ohio State University, and other graduate students across the nation. AIHM is now working with the Office of Distance and Continuing Education to license this course to other universities.

The Department of Human Development and Family Sciences (HDFS) offers two distance education courses: *Child Abuse and Neglect* and *Children with Special Needs*. One other HDFS course in gerontology is being developed with the support of a USDA competitive award. The OSU statewide Gerontology Conference, now in its 26th year, serves over 350 professionals annually, as well as workshops and conferences in nutrition, family policy, career planning and other topics.

Oregon State University Proposed College of Health and Human Sciences

The Department of Public Health offers distance delivery courses in *Health Data Analysis*, *Health Behaviors* (in 2002), *Health Care Law and Regulation*, and *Epidemiology* (in 2002). Other continuing education activities include an annual conference on youth violence prevention, offered in collaboration with the Oregon Office of Drug and Alcohol Prevention. The Public Health Department also sponsors the annual Women's Health Policy Forum.

In the new College, existing continuing education activities will be expanded in collaboration with OSU's Office of Distance and Continuing Education. In particular, opportunities that build on new linkages in the College will be pursued. Among these linkages are nutrition and exercise, human development in the context of disabilities, and aging and health policy.

Outreach and Service Programs. The new College will continue to lead seven major outreach programs that serve OSU and local communities.

Two key outreach programs address instructional, research, and service missions. These programs serve children and their families and also offer opportunities for research and professional experiences for undergraduate and graduate students in the College. Grants, contracts, user fees, and state dollars are combined with College support for these laboratory programs. The programs include:

- ***Child Development Center:*** This Center supports interdisciplinary child and family development research, student training, and an exemplary preschool program serving more than 150 children and their families, including children who have special developmental needs and who come from low-income families. Annually, over 300 students from across OSU work in the Center. The Center is entering its 75th year of operation. In addition to College support for its instructional and research mission, the Center receives nearly \$500,000 annually in external grants and contracts.
- The ***Special Physical and Motor Fitness Program*** is offered for children with disabilities. Participants receive individualized educational programs that emphasize physical fitness, gross motor development, and aquatic skills. Almost 100 children and families are enrolled in this program annually. Students from across OSU work in the clinic to gain professional experience. In addition to support by the College, the program receives support through grants, contracts and user fees, and is a local United Way Fund recipient.

Self-supported Outreach Programs: Three programs sponsored primarily by the College of Health and Human Performance address the needs of community members in Corvallis and around Oregon.

- ***KidSpirit Activity Program for Children:*** This year-around program provides recreational, arts, physical education, health and safety programs to meet the needs of children and youth of all ages and abilities. Participants are primarily drawn from the community. Staffed by trained and supervised OSU students, each year the program serves over 2,800 children and relies primarily on user fees.
- ***Oregon Safety Students on the Move (OSSOM):*** OSSOM is an umbrella organization for youth traffic safety and other prevention activities across the state

Oregon State University Proposed College of Health and Human Sciences

of Oregon. This program conducts leadership camps for high school and middle school-aged students throughout the year, training young people in leadership skills to develop safe and healthy communities.

- ***Team Oregon Motor Cycle Safety:*** This program promotes safe and responsible motorcycle operation through quality rider training programs and public information campaigns throughout Oregon. The program is sponsored by the Oregon Department of Transportation and funded by motorcycle endorsement fees and participant tuition.

Two other programs offer instruction and support for physical and recreational sports to members of the OSU community. Staffed primarily by OSU students and EXSS fixed term faculty, these programs include the:

- ***OSU Intramural Program*** - annually enrolls over 3,000 students, and
- ***OSU Faculty-Staff Fitness Program*** – annually enrolls 800 persons.

Resources needed, if any:

The College of Health and Human Sciences will integrate the faculty, staff, facilities and equipment, fiscal resources, and other assets of both current Colleges.

The successful creation of the new College requires the maintenance of these current resources and will have zero impact on the current budget level. Current fiscal resources are summarized below and detailed beginning on page 22.

- For FY 2001-2002, the combined budget of the two Colleges is currently \$13,676,190 exclusive of Extension Service support. This total includes state allocations, foundation and other income, and research funds allocated by the OSU Agricultural Experiment Station (AES). In addition, annually the two Colleges average over \$3 million dollars in grants and contracts to support education, scholarship and outreach initiatives.
- Private giving will need to grow as a critical source of support for the College. Past development efforts in the College of Home Economics and Education resulted in construction of the \$2.5 million Mercedes Bates Family Study Center and over \$300,000 in industry support for creation of a state-of-the-art Computer-Design Laboratory in the Department of Apparel, Interiors, Housing, and Merchandising. Private giving has led to the creation of two endowed chairs--the Barbara Emily Knudson Family Policy Endowed Chair and the Jo Anne Leonard Petersen Endowed Chair in Gerontology and Family Studies.
- Several million dollars in endowed scholarships and fellowships support undergraduate and graduate students. In FY 2000-01, over \$300,000 in fellowships and scholarships were awarded across the two current Colleges.

Oregon State University Proposed College of Health and Human Sciences

The new College of Health and Human Sciences will combine the above state allocations, AES support, extramural funding, and private giving to advance vital research, teaching, and other initiatives that improve the lives of individuals and families across the lifespan. Strategic reallocation of existing resources has created the foundation for the new College.

Beginning in 2001, these strategic internal allocations included:

- Appointment of a new Department Chair for Nutrition and Food Management with expertise in nutrition and exercise. Priority is being given to expansion of collaborative instruction and research joining NFM and EXSS in the new College. In Fall 2001, the NFM and EXSS graduate programs will be offering a joint graduate seminar and collaborative use of new and existing research equipment and facilities.
- Reallocation of Family Finance and Family Resource Management faculty positions to child development including expanded support for coursework and fieldwork addressing special needs children.
- Investment of existing Extension Family and Community Development resources to create a Health and Family state specialist position; this position will open in Fall 2001 and will support expanded programming in health, family and aging.
- Investment of existing resources to expand centralized student advising and support services.
- Investment of family policy endowment resources in the hiring of a new Public Health faculty person to pursue research in health insurance issues affecting individuals and families.

OSU will support the new College with recurring adequate state education and general fund resources to sustain current levels of FTE and operations. This commitment recognizes the significant enrollment growth over the past several years in instructional programs in both current Colleges and the value of these unique, accredited programs to the university mission and the state of Oregon.

Non-recurring funds. In addition to current resources, a request is made for \$200,000 in non-recurring funds to provide leadership for a multidisciplinary research initiative linking nutrition, physical activity and health across the lifespan.

In this area of research, tremendous current opportunities for federal and private funding can be most aggressively pursued with the investment of these limited, new University resources now. These resources will support a director and dedicated faculty time in NFM, EXSS, PH, and HDFS to develop collaborative proposals that will be submitted to private and federal agencies in the coming year. This initiative will be co-led by Dr. Melinda Manore, Chair NFM, and Dr. Tony Wilcox, Chair, EXSS with first proposal submission scheduled by summer 2002.

Oregon State University Proposed College of Health and Human Sciences

4a: Personnel - FTE academic; FTE classified.

The College will combine the current levels of academic and classified personnel now found in the two Colleges. Exclusive of Extension Service personnel, these FTE are shown in Table 4.

Table 4. FY 2000-01 Faculty, Classified, and Student FTE , Exclusive of Extension FTE

	State General Fund ^a	Endowed Foundation Funds	Grants and Contracts	Auxiliaries; Fee Income ^b	Agricultural Experiment Station Funds	Total
Faculty FTE	80.00	0.82	24.08	2.70	3.85	111.45
Graduate Assistant FTE	24.31	0	6.33	0.13	1.60	32.37
Classified FTE	16.32	0	6.65	1.44	0.10	24.51
Student Worker FTE	1.90	0	2.69	15.64	0	20.23
Total FTE	122.53	0.82	39.75	19.91	5.55	188.56

a Includes state resources, returned overhead, Physical Activity Curriculum income and preschool income.

b Self-supporting fee programs: Faculty-Staff Fitness, *KidSpirit*, and others.

4b: Facilities and equipment.

The programs of the College of Health and Human Sciences are located in six campus buildings (listed below). In addition, the College maintains several indoor and outdoor sports and recreational facilities and related equipment to support academic and outreach programs.

All buildings are adjacent to the OSU central quadrangle and within easy walking distance of one another. Except for Bates Family Study Center, all of the buildings are over 50 years old and have the attendant charm and challenges. Computer wiring upgrades in all buildings are underway and will significantly improve the stability of instructional and administrative operations. Although renovations and deferred maintenance are continual challenges, the buildings are operational for basic needs.

- **Bates Family Study Center** - Completed in 1994, this is the first academic building in the Oregon University System constructed entirely with private funds. The 15,000 square-foot facility houses the Child Development Center, Family

Oregon State University Proposed College of Health and Human Sciences

Policy Program, and offers space for funded research, instruction, and outreach programs focused on families.

- **Langton Hall** – Administrative offices for Exercise and Sport Science, the College of HHP Advising and Student Services, and several outreach programs including Intramural Sports, Faculty Staff Fitness, Physical Activity Curriculum, *KidSpirit*; faculty offices, gymnasia, swimming pool, Sport Exercise Psychology Lab, and industrial areas.
- **Milam Hall** – Administrative and faculty offices, student services, OSU classrooms, human nutrition and foods laboratories and related equipment; design studios, computer and textiles laboratories and an historic costume and textile collection for teaching and research purposes. This building houses Apparel, Interiors, Housing, and Merchandising, Human Development and Family Sciences, and Nutrition and Food Management Departments and the Extension Family and Community Development Program.
- **Strand Agricultural Hall** – Administrative offices for two outreach programs: Oregon Safety Students on the Move (OSSOM) and *Team Oregon* Motorcycle Safety Education Program.
- **Waldo Hall** – A portion of two floors of this four story building house the Department of Public Health administrative and faculty offices, the HIV/AIDS Center offices, computer laboratories, and OSU classrooms.
- **Women's Building** – College of HHP Administrative and faculty offices, instructional spaces including swimming pool, gymnasiums, and dance studios. Houses laboratories for human performance, biomechanics, motor behavior, bone research, muscle physiology, sport pedagogy, and the sports medicine and disabilities research lab.

Over the first years of the new College, it is anticipated that strategic integration of programs and faculty will facilitate interaction and collaboration. For example, within the first year of operation, the student services offices will be combined as will the current deans' offices. In addition, investments in laboratories and expensive equipment, particularly for human nutrition and exercise physiology research, will be facilitated by strategic sharing of resources and collaborative investigations.

OTHER: Funding requirements (estimated annual budget), and sources.

The budgetary impact of the creation of the College is zero. Funding requirements are met within FY 2001-02 state general funds of \$8,601,848 (including state allocations, returned overhead, and Physical Activity Program and preschool income.) The total FY 2001-02 budget of \$13,676,190 includes \$5,074,342 in foundation, grants, AES, and other resources (Table 5, beginning on page 22.) Descriptions of current internal reallocations in the new College are presented on page 19. A one-time allocation of \$200,000 from within OSU, while not essential to the creation of the College, will support aggressive pursuit of currently available external resources. This request is shown for FY 2001-02 only.

Oregon State University Proposed College of Health and Human Sciences

Table 5: ESTIMATED COSTS AND SOURCES OF FUNDS FOR PROPOSED PROGRAM

(Total new resources required to handle the increased workload, if any. If no new resources are required, the budgetary impact should be reported as zero. See Instructions, page 6.)

INSTITUTION	Oregon State University					
PROGRAM	College of Health and Human Sciences					
ACADEMIC YEAR	2001-02					
First Year (Note: All years are presented in constant 2001-02 dollars)	Column A	Column B	Column C	Column D	Column E	Column F
	FROM CURRENT BUDGET UNIT ZERO IMPACT ON BUDGET	INSTITUTIONAL REALLOCATION FROM OTHER BUDGET UNIT	SPECIAL STATE APPROPRIATION REQUEST	FEDERAL FUNDS AND OTHER GRANTS	FEES, SALES, AND OTHER INCOME	LINE ITEM TOTAL
PERSONNEL						
Faculty (Include FTE)	\$ 5,765,250 (111.45 FTE)	\$ 80,000 (1.00 FTE)				\$ 5,845,250 (112.45 FTE)
Graduate Assistants (Include FTE)	954,972 (32.37 FTE)	13,340 (.49 FTE)				968,312 (32.86 FTE)
Support Staff (Include FTE)	677,932 (24.51 FTE)	14,604 (.50 FTE)				692,536 (25.01 FTE)
Student Workers (Include FTE)	334,918 (20.23 FTE)					334,918 (20.23 FTE)
Fellowships/Scholarships/Stipends	393,148					393,148
OPE	2,429,475	34,037				2,463,512
Fee Remissions	486,054	6,558				492,612
Subtotal Personnel	11,041,749 (188.56 FTE)	148,539 (1.99 FTE)				11,190,288 (190.55 FTE)
OTHER RESOURCES						
Library/Printed						
Library/Electronic						
Supplies and Services	1,630,400	2,000				1,632,400
Travel	109,564	15,000				124,564
Equipment (over \$5,000)	78,195					78,195
Other Expenses (Community Network; Computers)	149,936	34,461				184,397
(F & A Cost)	601,217					601,217
Subtotal Other Resources	2,569,312	51,461				2,620,773
PHYSICAL FACILITIES						
Construction						
Major Renovation	65,129					65,129
Other Expenses						
Subtotal Facilities	65,129					65,129
TOTALS	\$13,676,190	\$ 200,000				\$13,876,190

Oregon State University Proposed College of Health and Human Sciences

Table 5: ESTIMATED COSTS AND SOURCES OF FUNDS FOR PROPOSED PROGRAM - (Total new resources required, if any. If no new resources are required, report the budgetary impact as zero)

INSTITUTION						
Oregon State University						
PROGRAM						
College of Health and Human Sciences						
ACADEMIC YEAR						
2002-03						
Second Year						
(Note: All years are presented in constant 2001-02 dollars)						
FROM CURRENT BUDGET UNIT ZERO IMPACT ON BUDGET		INSTITUTIONAL REALLOCATION FROM OTHER BUDGET UNIT	SPECIAL STATE APPROPRIATION REQUEST	FEDERAL FUNDS AND OTHER GRANTS	FEES, SALES, AND OTHER INCOME	LINE ITEM TOTAL
PERSONNEL						
Faculty (Include FTE) \$ 5,765,250 (111.45 FTE)						
Graduate Assistants (Include FTE) 954,972 (32.37 FTE)						
Support Staff (Include FTE) 677,932 (24.51 FTE)						
Student Workers (Include FTE) 334,918 (20.23 FTE)						
Fellowships/Scholarships/Stipends 393,148						
OPE 2,429,475						
Fee Remissions 486,054						
Subtotal Personnel 11,041,749 (188.56 FTE)						
OTHER RESOURCES						
Library/Printed						
Library/Electronic						
Supplies and Services 1,630,400						
Travel 109,564						
Equipment (over \$5,000) 78,195						
Other Expenses (Community Network, Computers) 149,936						
(F & A Cost) 601,217						
Subtotal Other Resources 2,569,312						
PHYSICAL FACILITIES						
Construction						
Major Renovation 65,129						
Other Expenses						
Subtotal Facilities 65,129						
TOTALS						
\$13,676,190						

Oregon State University Proposed College of Health and Human Sciences

Table 5: ESTIMATED COSTS AND SOURCES OF FUNDS FOR PROPOSED PROGRAM (Total new resources required, if any. If no new resources are required, report the budgetary impact as zero)

<i>INSTITUTION</i>	Oregon State University					
<i>PROGRAM</i>	College of Health and Human Sciences					
<i>ACADEMIC YEAR</i>	2003-04					
Third Year (Note: All years are presented in constant 2001-02 dollars)	Column A	Column B	Column C	Column D	Column E	Column F
	FROM CURRENT BUDGET UNIT ZERO IMPACT ON BUDGET	INSTITUTIONAL REALLOCATION FROM OTHER BUDGET UNIT	SPECIAL STATE APPROPRIATION REQUEST	FEDERAL FUNDS AND OTHER GRANTS	FEES, SALES, AND OTHER INCOME	LINE ITEM TOTAL
PERSONNEL						
Faculty (Include FTE)	\$ 5,765,250 (111.45 FTE)					\$ 5,765,250 (111.45 FTE)
Graduate Assistants (Include FTE)	954,972 (32.37 FTE)					954,972 (32.37 FTE)
Support Staff (Include FTE)	677,932 (24.51 FTE)					677,932 (24.51 FTE)
Student Workers (Include FTE)	334,918 (20.23 FTE)					334,918 (20.23 FTE)
Fellowships/Scholarships/Stipends	393,148					393,148
OPE	2,429,475					2,429,475
Fee Remissions	486,054					486,054
Subtotal Personnel	11,041,749 (188.56 FTE)					11,041,749 (188.56 FTE)
OTHER RESOURCES						
Library/Printed						
Library/Electronic						
Supplies and Services	1,630,400					1,630,400
Travel	109,564					109,564
Equipment (over \$5,000)	78,195					78,195
Other Expenses (Community Network, Computers)	149,936					149,936
(F & A Cost)	601,217					601,217
Subtotal Other Resources	2,569,312					2,569,312
PHYSICAL FACILITIES						
Construction						
Major Renovation	65,129					65,129
Other Expenses						
Subtotal Facilities	65,129					65,129
TOTALS	\$13,676,190					\$13,676,190

Oregon State University Proposed College of Health and Human Sciences

Table 5: ESTIMATED COSTS AND SOURCES OF FUNDS FOR PROPOSED PROGRAM (Total new resources required, if any. If no new resources are required, report the budgetary impact as zero.)

<i>INSTITUTION</i>	Oregon State University					
<i>PROGRAM</i>	College of Health and Human Sciences					
<i>ACADEMIC YEAR</i>	2004-05					
Fourth Year (Note: All years are presented in constant 2001-02 dollars)	Column A	Column B	Column C	Column D	Column E	Column F
	FROM CURRENT BUDGETARY UNIT ZERO IMPACT ON BUDGET	INSTITUTIONAL REALLOCATION FROM OTHER BUDGETARY UNIT	FROM SPECIAL STATE APPROPRIATION REQUEST	FROM FEDERAL FUNDS AND OTHER GRANTS	FROM FEES, SALES, AND OTHER INCOME	LINE ITEM TOTAL
PERSONNEL						
Faculty (Include FTE)	\$ 5,765,250 (111.45 FTE)					\$ 5,765,250 (111.45 FTE)
Graduate Assistants (Include FTE)	954,972 (32.37 FTE)					954,972 (32.37 FTE)
Support Staff (Include FTE)	677,932 (24.51 FTE)					677,932 (24.51 FTE)
Student Workers (Include FTE)	334,918 (20.23 FTE)					334,918 (20.23 FTE)
Fellowships/Scholarships/Stipends	393,148					393,148
OPE	2,429,475					2,429,475
Fee Remissions	486,054					486,054
Subtotal Personnel	11,041,749 (188.56 FTE)					11,041,749 (188.56 FTE)
OTHER RESOURCES						
Library/Printed						
Library/Electronic						
Supplies and Services	1,630,400					1,630,400
Travel	109,564					109,564
Equipment (over \$5,000)	78,195					78,195
Other Expenses (Community Network, Computers)	149,936					149,936
(F & A Cost)	601,217					601,217
Subtotal Other Resources	2,569,312					2,569,312
PHYSICAL FACILITIES						
Construction						
Major Renovation	65,129					65,129
Other Expenses						
Subtotal Facilities	65,129					65,129
TOTALS	\$13,676,190					\$13,676,190

Oregon State University Proposed College of Health and Human Sciences

Relationship of the Proposed Unit to the Institutional Mission.

Oregon State University is Oregon's land-grant, sea-grant and space-grant institution, and has programs and faculty located in every county of the state. Oregon State University aspires to stimulate a lasting attitude of inquiry, openness and social responsibility through excellent academic programs, educational experiences and creative scholarship.

Within this mission, three strategic goals guide Oregon State University. First, OSU is a Statewide Campus extending the University into every community in Oregon. Second, OSU is committed to a compelling learning experience that engenders societal values and skills that benefit the individual and society. Third, OSU aspires to grow as a top-tier university. Important measures of success are the quality of students, alumni, faculty, instructional and research facilities, and scholarship.

The College of Health and Human Sciences supports and advances the above OSU mission and strategic goals.

- Through compelling professional education, scholarship, Extension, outreach, and service, this new College will enhance the lives of people and communities in Oregon, the region, the nation, and the world.
- The new College will build on the disciplinary traditions of professional education, statewide Extension Service and other outreach programs, and relevant scholarship that improve people's lives and communities.
- Overall, the College of Health and Human Sciences optimizes the University's long-term capacity to lead professional education, scholarship, Extension, outreach, policy, programs, and service related to human health, development, environments, and well-being.

Long-range Goals and Plans for the Unit

Building a new College will begin with the approval of this proposal. Over the next several years, innovative, interdisciplinary degrees and structures will be carefully planned, reviewed and implemented within OSU faculty governance and Oregon University Systems guidelines.

Thus it is expected that the current departmental structures and degrees will be retained through June 30, 2003, in order to facilitate instruction, outreach, and scholarship. Following that date, the College will be fully engaged as a more integrated, strategic, and interdisciplinary organization. Through strategic planning, creative thinking, and realistic investments, the new College will enhance strong existing programs, and develop new, collaborative initiatives in priority areas.

In March 2001, when OSU reviewed and approved the recommendation for a new College, a two-phase design and implementation process was initiated. This process is on schedule as Phase 1 nears completion with the submission of this Category 1 Proposal.

Oregon State University Proposed College of Health and Human Sciences

Phase 1: Initiating a New College - March 1 to December 31, 2001

- Engage faculty, students, alumni and donors, other Colleges, and other stakeholders in the development of the mission and name for the new College.
- Extend and complete a national search for a Dean for the new College.
- Engage faculty in the identification of opportunities for strategic multidisciplinary initiatives within and outside the new College, including opportunities for integration and collaboration in teaching, scholarship, Extension Service, and other functions. Include key stakeholders in the above activity, including appropriate representatives of other OSU Colleges, centers, institutes and programs.
- Develop and submit an Abbreviated Category I proposal to create the new College based on a merger of two existing colleges.
- Begin integration of the policies and procedures existing in the two former Colleges, with priority attention to promotion and tenure processes, budgeting and resource allocation, faculty governance, and fund development.

Phase 2: Building a New College – January 1, 2002 to June 30, 2002 and Beyond

- Fully initiate the new College following OSU and OUS review and approval.
- Engage a new Dean in the development of the new College, and creation of a strategic plan that translates the College's mission into specific desired outcomes, actions, and timelines.
- Accelerate curricular review and other planning for strategic integration, collaboration, and multidisciplinary innovation in teaching, scholarship, Extension Service and other outreach programs within and outside the College. Actively engage faculty, administrators, students, and other stakeholders within and outside the new College in curricular reviews and other key planning processes.
- Begin to identify and pursue internal and external resources for development of College's programs, especially those that support collaborative, multidisciplinary teaching, scholarship, Extension Service, and other outreach initiatives.
- By July 1, 2002, fully integrate:
 - ✓ Extension Family and Community Development Program faculty into OSU departments
 - ✓ Budgets, and the budget and resource allocation processes;
 - ✓ College administrative offices and personnel;
 - ✓ Student advising and support services;
 - ✓ Policies and procedures regarding personnel, promotion and tenure, faculty governance, curriculum innovation and teaching; and
 - ✓ External relations including alumni relationships, advisory boards, development, and other areas of operation.

Oregon State University Proposed College of Health and Human Sciences

Relationship of the Proposed Unit to Programs at other OUS Institutions in the State.

Most of the programs and degree areas in the new College are unique in the OUS system. OSU offers the most comprehensive graduate training in the non-clinical health professions. For example, as Oregon's only nationally accredited undergraduate through doctoral public health program, the Public Health Department provides top quality graduates in Public Health including Health Promotion and Education, Health Care Administration, and Environmental Health & Safety.

In the Oregon University System, unique undergraduate through doctoral programs also are offered in Human Development and Family Sciences, Nutrition and Food Management, Apparel Design, Interior Design, Housing Studies, and Merchandising Management. The College offers Oregon's most comprehensive undergraduate through doctoral programs in Exercise and Sport Science.

The College has an extensive history of collaboration in instructional programming with other OUS institutions. These include participation in the Oregon MPH degree program (OSU, PSU, and OHSU), gerontology education (OSU, PSU, OHSU and SOU), and early education and intervention for special needs children (OSU/HDFS, OSU/EXSS, WOU.)

Purpose for a Proposed Change

The purpose of this proposal is to create a new, integrated OSU College of Health and Human Sciences.

This College will assure the best future for the involved units, support the University's mission, and optimize the University's long-term capacity to lead professional education, scholarship, Extension Service and other outreach, policy and program development that enhances the lives, health, and environments of individuals, families and communities in Oregon and beyond.

Oregon State University Proposed College of Health and Human Sciences

Appendix A

Planning Process for the College of Health and Human Sciences

Creation of a new College involved administrators, faculty, staff, students, and other stakeholders of the existing Colleges. In December 2000, a leadership group was established, consisting of the Interim Deans, all department chairs and other administrators within both Colleges. OSU InterACTION team members, trained in group decision-making, worked with the leadership group to implement a series of strategies that involved all stakeholders.

Throughout January and February 2001, the Interim Deans communicated with faculty and staff in several venues including department meetings, teleconferences with off-campus and on-campus faculty, and separate meetings for faculty and staff within each College. Weekly email communication provided faculty and staff with updates on issues and ideas identified in meetings. In addition, over 100 on- and off-campus faculty corresponded directly with the Interim Deans to raise ideas and respond to drafts, or otherwise participate.

In the same time period, the Interim Deans involved other OSU administrators and the Faculty Senate Executive Committee in discussions of a new College. In December 2000, a letter to alumni, emeritus faculty, donors, and supporters of the College of Home Economics and Education were told that a new College was being considered. In January 2001, the College newspaper, *HomeFront*, highlighted the idea of a new college and was distributed to several thousand students, alumni and supporters. Health and Human Performance alums received updates in *Connections*, the HHP newsletter. Responses students and alums of both Colleges supported creation of a College that would extend the current Colleges' missions.

On February 7, 2001, over 70 residential and Extension Service faculty and staff from both Colleges met. The Interim Deans provided overviews of departments, programs, and staffing in each College. Faculty and staff worked in small groups to review the possibilities and challenges of a new College. Starting with summary lists of possibilities and challenges from earlier meetings and communications, the small groups reviewed, expanded, and prioritized key issues associated with the creation of a new College. This joint session revealed the potential strengths and the challenges faced in the creation of a new College.

Based on the above, the Interim Deans drafted a recommendation to create a new College. This draft was shared with the leadership, faculty, and staff of their Colleges for review and comment. The overwhelming response was positive. The final recommendation was submitted to Provost White on February 23, 2001.

Following OSU approval in March, the development of a joint mission, vision, and name for the new College commenced. Again, the faculty, leadership, and alums were engaged in this process through meetings and review of emailed drafts. In early June, a joint meeting of the two faculties led to the approval of the mission, vision, values and name that formed the basis for this Category I proposal.

In late September 2001, the faculty of both Colleges were sent a copy of the proposal and later met to discuss and to provide constructive comments. Based on this input, the Category I proposal was finalized and approved by the leadership group and the two Colleges' Curriculum Committee. The Category I proposal was submitted to the OSU Office of Academic Programs in late October 2001 for internal OSU consideration and forwarding to the Oregon University System.